



ASPIRE

— TO MOVE —



Linley Close, Bath, BA2

Video and physical viewings available. Furnished, two/three bedroom ground floor flat with a garden and available now. Not suitable for three students sharing.

Linley Close is located to the South West of the city. There is a bus stop 50 meters away which has regular bus services. Local shops and amenities are located 0.6 miles away.

£1,500 PCM

Linley Close, Bath, BA2

- Two/three bedroom flat
- Garden
- Holding deposit: £346
- Furnished
- Available 15th August
- 12 month initial contract
- Suitable for two sharers, mature student or family
- Council tax A

Video and physical viewings available. Furnished, two/three bedroom ground floor flat with a garden and available now. Not suitable for three students sharing.

Linley Close is located to the South West of the city. There is a bus stop 50 meters away which has regular bus services. Local shops and amenities are located 0.6 miles away.

The accommodation comprises of entrance hallway with two storage cupboards. The kitchen has base and wall units, cooker, gas hob, two fridges, freezer and a washing machine. The living dining room has a L-shaped sofa, coffee table, bookshelf and dining table with chairs. There are three bedrooms, all of which could fit a double bed. Bedroom one has a super king sized bed, two wardrobes, chest of drawers, two bedside tables and desk with chair. Bedroom two has a double bed and wardrobe. This room also has it's own WC and sink. Bedroom three has wardrobe space with rail, chair and chest of drawers. The bathroom has shower over bath and sink, the toilet is in a separate, adjacent room.

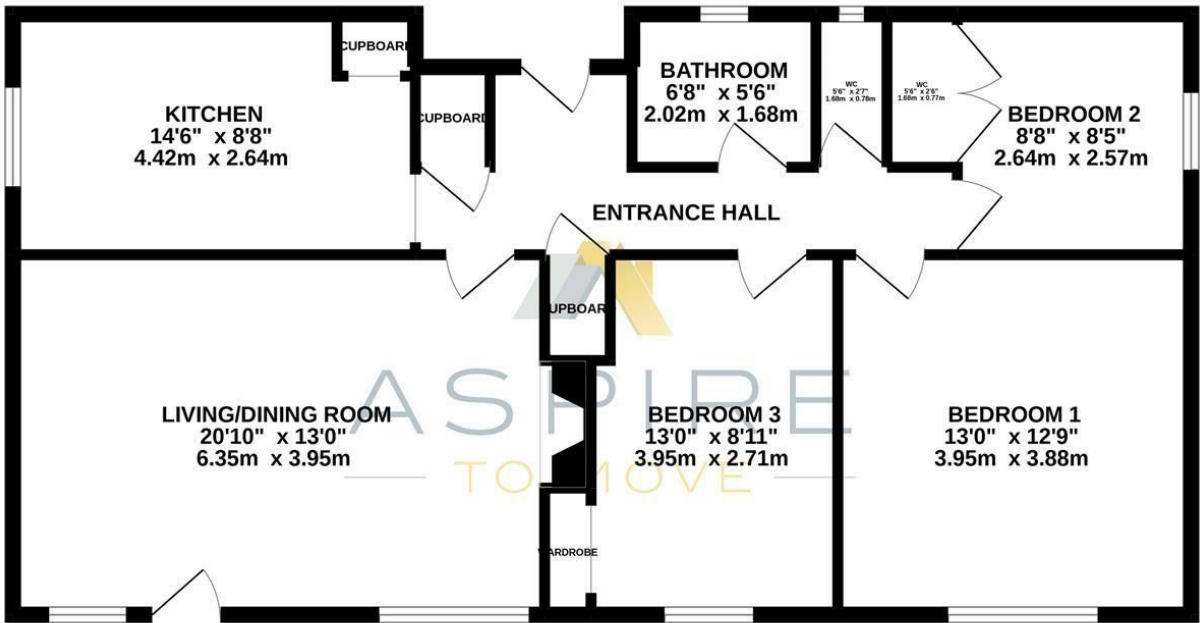
The property benefits from a garden which can be accessed from the living/dining room or via side access. The property is offered furnished and would best suit a family, couple or a maximum of two sharers, mature students. Parking is available on street.

Council tax band A: £1476.36





GROUND FLOOR



LINLEY CLOSE, BATH, BA2

Whilst every attempt has been made to ensure the accuracy of the floorplan contained here, measurements of doors, windows, rooms and any other items are approximate and no responsibility is taken for any error, omission or mis-statement. This plan is for illustrative purposes only and should be used as such by any prospective purchaser. The services, systems and appliances shown have not been tested and no guarantee as to their operability or efficiency can be given.
Made with Metropix ©2022.

These particulars, whilst believed to be accurate are set out as a general outline only for guidance and do not constitute any part of an offer or contract. Intending purchasers should not rely on them as statements of representation of fact, but must satisfy themselves by inspection or otherwise as to their accuracy. No person in this firms employment has the authority to make or give any representation or warranty in respect of the property.

